

Our Vision

EPSOM AND EWELL



“

*I want to be in a place
that knows where it's
going and what future
it wants.*



Looking to the future

The future is what you make of it; and in Epsom and Ewell the future is shaped by the people who live, work and study here.

This document sets out the vision for the borough – a vision that has been drawn from the views of local people through the largest engagement exercise ever undertaken in Epsom and Ewell. This vision reflects the hopes and aspirations of local people and those with a stake in the future success of the borough.

The vision builds on the borough's many strengths and characteristics: the beautiful parks and nature reserves; top-performing schools and further and higher education centres; a dedicated performing arts college, as well as home to the only business school in the country for the creative industries.

The borough also enjoys a strong and growing economy, excellent connectivity to the Capital and beyond, as well as access to a diverse cultural offering, including a popular theatre, community spaces and award-winning leisure facilities.

The future of any place is influenced by its past. Epsom and Ewell is steeped in a rich history; from humble beginnings as a Saxon settlement to the location of Henry VIII's Nonsuch Palace, later becoming a fashionable Georgian Spa retreat and a thriving Market Town.

Epsom and Ewell has long been a place renowned for commerce and opportunity, the exchange of ideas and learning, as well as a place of solace and wellbeing. Today, the borough remains a global landmark: the birthplace of Epsom Salts and the Epsom Derby, one of the greatest sporting events in the world.

The vision is a testament to the clarity and shared ambition of local people about the future of Epsom and Ewell. It provides an opportunity to harness the borough's inherent strengths and gives confidence that by working together, we can look forward to an even more successful future.

This is Epsom and Ewell. This is our future.



Proud of our past preparing for the future

The Epsom and Ewell of the future will carry forward many themes from its past. The borough's connectivity and its long standing associations with commerce, learning, creativity and wellbeing have all been defining characteristics. It is also been a place shaped for centuries by a thriving horse racing heritage.



1538

Henry VIII builds Nonsuch Palace as an elaborate hunting retreat. The borough remains a destination for Royalty even today.



1618

The discovery of a mineral spring establishes Epsom as a popular **Spa Town** attracting people from all over the world to take the waters.



1685

Lady of the Manor Elizabeth Evelyn receives a royal charter to hold a **market in Epsom**, a tradition which still continues today.



1930

Stoneleigh is transformed from rural farmland to a thriving new community with its own shops, church, public house and cinema.



1953

NESCOT opens, as Ewell Technical College. The further education college now welcomes over 4,000 students a year to study in the borough.



1970

A flying saucer lands in the village and **Bourne Hall is officially opened** to the public with its library, museum and community rooms.

1780



Diomed wins the first ever Epsom Derby – a race that could have been called the ‘Epsom Bunbury’ were it not for the toss of a coin!

1847



The railway arrives, bringing jobs and families to Epsom and Ewell. Connection to the capital makes the borough a great place to live and work.

1896



The Manor Hospital is opened, the first in what was to be the world’s largest cluster of psychiatric hospitals. It even had its own light railway!

1974



Laine Theatre Arts is founded and soon earns a reputation as a high-class international training college for performing arts.

2008



The old School of Art receives the title of University from the Privy Council and is renamed **University for the Creative Arts**.

2020



The investment works on the **Market Place** come to an end, bringing a brand-new shared community space for the Town Centre.

“

*In the future, I want to see
Epsom and Ewell thrive as a
place to live and work.*



Artists impression of the new
state of the art facilities at the UCA

Our vision

for Epsom and Ewell

As a result of extensive research and an in-depth public consultation, five distinct themes come together to create our vision for Epsom and Ewell.



Green & Vibrant

Epsom and Ewell is already home to a number of award-winning parks and open spaces. You don't have to go far to appreciate the beautiful areas and nature reserves that are on your doorstep.

Local people are passionate about keeping their borough green and vibrant with an even greater focus on protecting the environment and supporting biodiversity.



Our vision

Where people are passionate about the environment

Rich with biodiversity and the best that nature has to offer

A great place to go walking or cycling with friends and family

A place with access to fantastic countryside and clean air

Tree lined streets with some of the best examples of eco-buildings

Clean and well maintained environment

Beautiful and well-designed public spaces



In 2040...

Epsom and Ewell is a modern market borough where nature and countryside thrive alongside sustainable, well-designed developments and vibrant public spaces where people can meet, play and relax.

In the future, our borough will offer greener, more energy efficient transport options including safe and improved cycle routes and walkways.

This is our vision for a green and vibrant Epsom and Ewell.



Opportunity & Prosperity

People come from all over the world to visit, work and study in Epsom and Ewell. With so many outstanding schools and higher education colleges, it's no surprise why the borough is a destination of choice for entrepreneurs and creative minds alike.

Local people want to live in a place where creativity is encouraged, where learning and ideas come together and anyone, no matter what their background, has the chance to succeed.



Our vision

A great place to start and grow your business

An ambitious place where there is investment in the future

A place to innovate and try out new ideas

Affordable homes for families and local workers

There's an excellent education

A place that offers an excellent start in life whatever your background

Where ambition is encouraged and nurtured



In 2040...

Epsom and Ewell is a borough that invests in the future – it supports businesses, allows them to grow and feel welcome.

In the future, our borough is rich with opportunity where local people thrive in education and their careers.

This is our vision for an Epsom and Ewell that is full of opportunity and prosperity for future

Safe & Well

Epsom and Ewell is a great place to bring up a family. It's a place where people feel safe at any time of day or night. The borough's unique heritage as a Spa town, where people once flocked to in their thousands, remains an important part of local history even today.

Local people want to live in a place where people are friendly and willing to lend a hand – where everything is easy to access and where people support each other.

Our vision

Where I can feel safe and secure at any time of day

A place that is family friendly, where people support each other

Easy access to world class health and wellbeing services

Where it's easy to keep healthy and active

Where I can breathe clean air

Where there is a strong community spirit

Where people come before traffic





In 2040...

Epsom and Ewell will offer world-class health and wellbeing services together with a strong and caring community spirit.

In the future, people will be able to live life to the full, whatever their age, with lots of opportunities to stay fit and healthy.

This is our vision for a safe and well Epsom and Ewell.

Cultural & Creative

Epsom and Ewell is brimming with local creative talent. It truly is a place where art, fashion, music and theatre come together. Epsom and Ewell is a place that embraces the modern without losing a sense of the past.

Local people want to live in a borough that has a clear identity that distinguishes Epsom and Ewell from other places; that promotes its unique characteristics, what it has to offer and is a real 'go-to' destination where people want to visit, study and invest.

Our vision

Proud of the rich local history and heritage

A clear and compelling identity that excites and inspires

A thriving market and unique retail offer

A home for creative enterprises

There's a wide range of local events and activities for people to take part in

A great place to meet up after work with friends and family

Where people work together for the benefit of the community



thehortonepsom.org



In 2040...

Epsom and Ewell will bring together the best of history, heritage and culture.

Our town centres and high streets will offer a unique shopping experience, where there is always something going on.

In the future, the opportunities available will continue to excite and inspire a new generation of creative and dynamic minds to live, work and study here.

This is our vision for a creative and cultural Epsom and Ewell.

Epsom and Ewell offers the best of both worlds – easy access to the London and the West End as well as multiple areas of outstanding natural beauty just a stone's throw away.

Local people want to see even greater connectivity in the future; not only with faster, more frequent bus and rail services, but also a high-speed digital world full of innovation and new technology.

Smart & Connected

Our vision

Easy to get around and get things done

Climate friendly public transport options

A strong community where it's easy to network and meet like-minded people

Part of Zone 6 and Cross Rail 2

Where it's easier not to own a car

Innovative and forward looking with the right skills for the future

High speed digital connectivity where it's easy to plug in





View of the City of London
from Epsom Downs

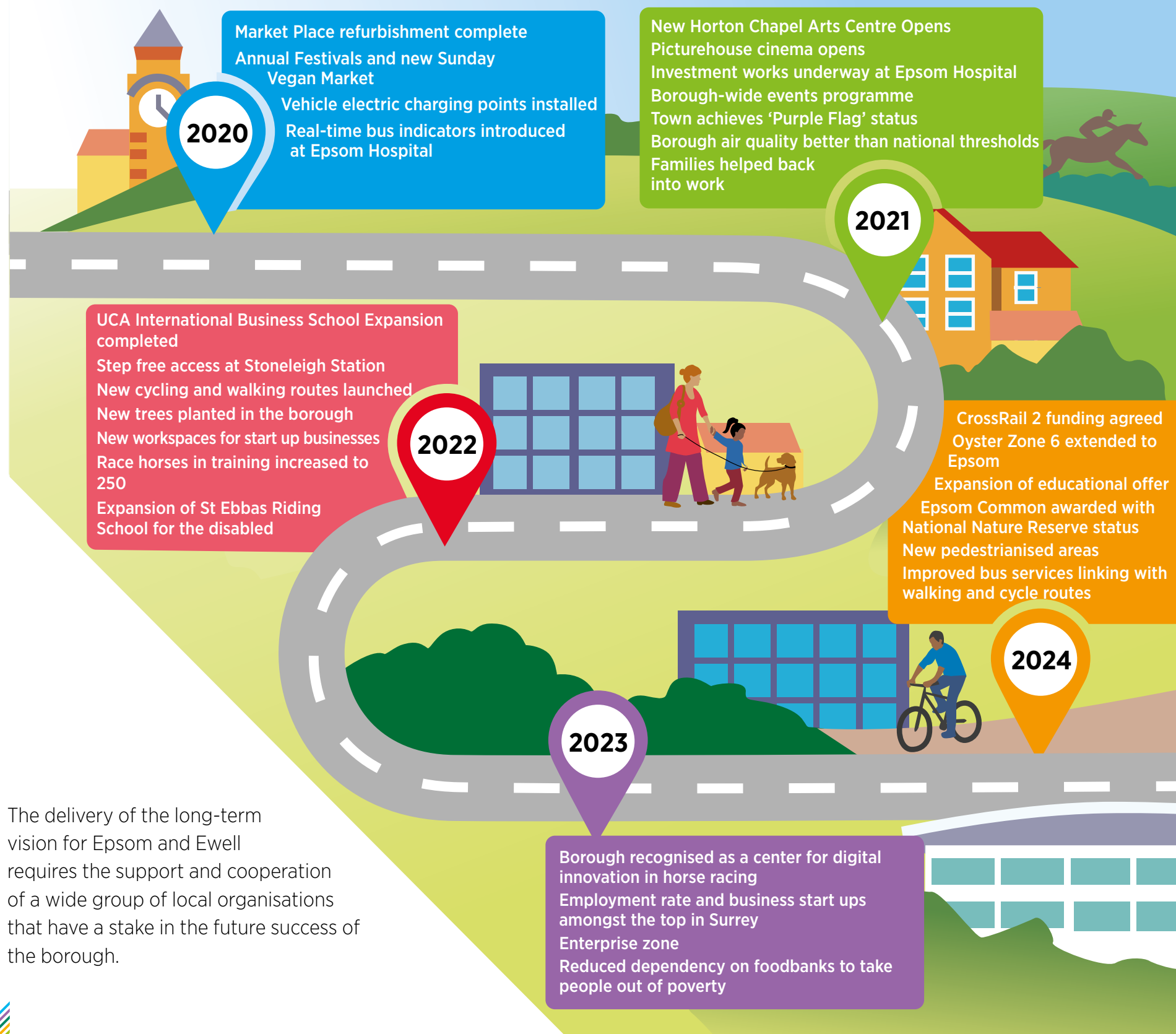
In 2040...

Epsom and Ewell will be a strong, connected and modern community of problem solvers who work together and support each other.

In the future, getting around the borough (and beyond) will be even easier, offering excellent opportunities to network and meet with like-minded professionals.

This is our vision for a smart and connected Epsom and Ewell.

Aspirations for the first five years and beyond



The delivery of the long-term vision for Epsom and Ewell requires the support and cooperation of a wide group of local organisations that have a stake in the future success of the borough.

Together, we can...

These are just some of the logos of supporters who will work together to deliver the vision.



Thanks go to the following supporters and organisations for providing photographs: Bourne Hall Museum, Epsom and Ewell History Explorer, Horton Chapel Project, Laine Theatre Arts, Nathalia Anzola, Nescot, Paul Taylor (What's On In My Town Group), RAC Club Epsom, Rainbow Leisure Centre, The Ashley Centre, The Jockey Club, University for the Creative Arts and UNStudio. For full photography credits, please visit the Future40 website.

