

To: All Members of the Licensing (Hearing) Sub-Committee

Dear Councillor,

**LICENSING (HEARING) SUB-COMMITTEE - MONDAY, 5TH DECEMBER, 2022 ,
Council Chamber - Epsom Town Hall**

Please find attached the following document(s) for the meeting of the Licensing (Hearing) Sub-Committee to be held on Monday, 5th December, 2022.

1. **SUPPLEMENTARY INFORMATION - HEARING DOCUMENT** (Pages 3 - 18)

The Applicant has requested the following document be circulated to Members of the Sub-Committee and to interested parties for consideration at the Hearing.

For further information, please contact Democratic Services, democraticservices@epsom-ewell.gov.uk or 01372 732000

Yours sincerely

A handwritten signature in black ink, appearing to read "Sing".

Interim Chief Executive

This page is intentionally left blank



EPSOM GRILL HEARING
3 Waterloo Rd, Epsom KT19 8AY

EPSOM GRILL APPLICATION



Premise Licence Number: EEBC/00232/LAPRE

Late Night Refreshment 23:00-02:00 Monday-Sunday

Closure at 2:30 Monday-Sunday

A transfer application was submitted June 2022

Full Variation

Removal of Condition

4, 5(f), 7, part of condition 8, 9, 10, 17, 23, 24, 25, 26 from Annex 2

Late night refreshment Monday-Sunday 23:00-04:00

Closure at 04:30

AREA

The Boogie Lounge

1A Waterloo Rd, Epsom KT19 8AY

Closed today ^

Monday Closed

Tuesday Closed

Wednesday Closed

Thursday 10:30pm–2am

Friday 10:30pm–2am

Saturday 10:30pm–2am


Sunday Closed

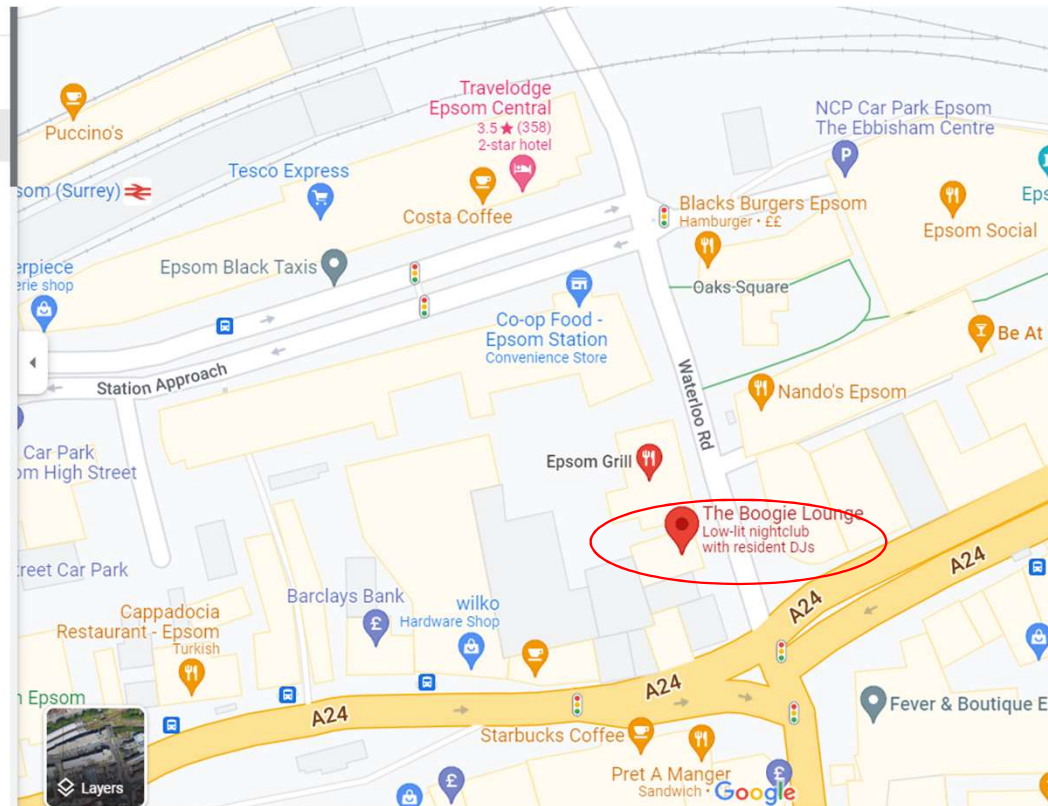
[Suggest new hours](#)

 boogielounge.com

 01372 749393


 8PMM+C3 Epsom

 Send to your phone




AREA


Fever&Boutique Epsom


 Closed today ^


Monday	Closed
Tuesday	Closed
Wednesday	Closed
Thursday	10pm–3am
Friday	10pm–3am
Saturday	10pm–3am
Sunday	Closed


[Suggest new hours](#)


 Menu
feverbars.co.uk


 feverbars.co.uk

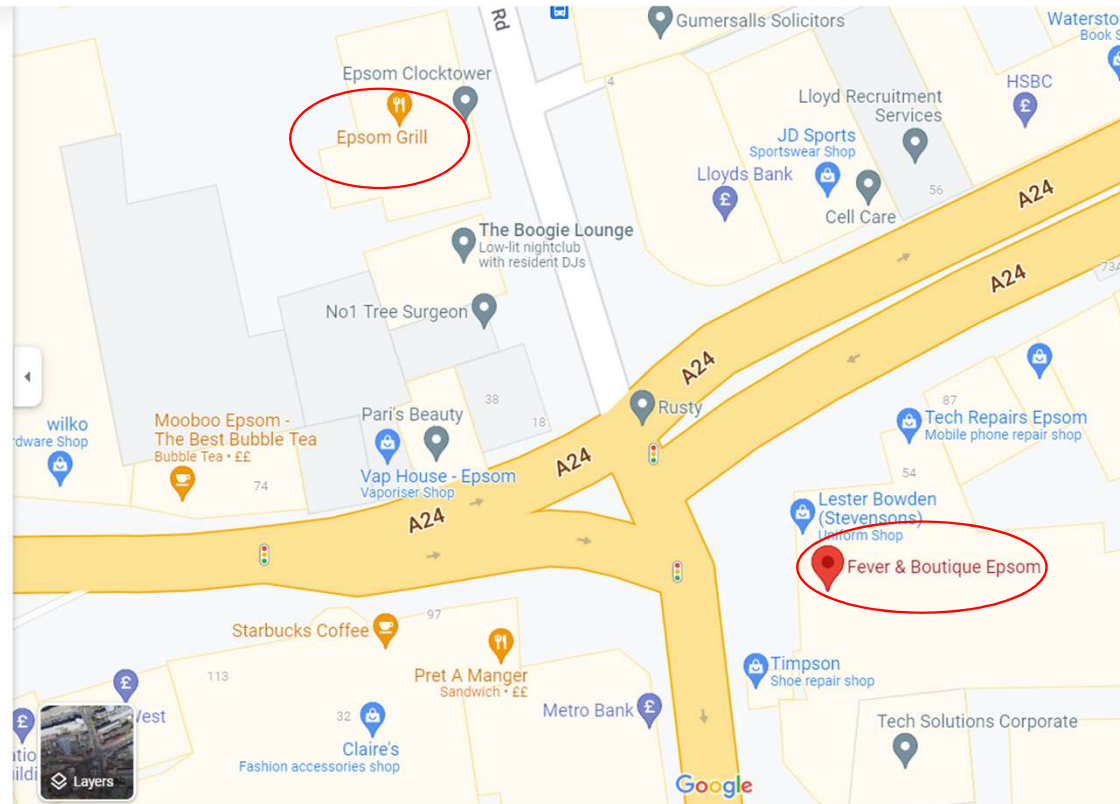
 01372 232314

 8PMM+78 Epsom

 Send to your phone

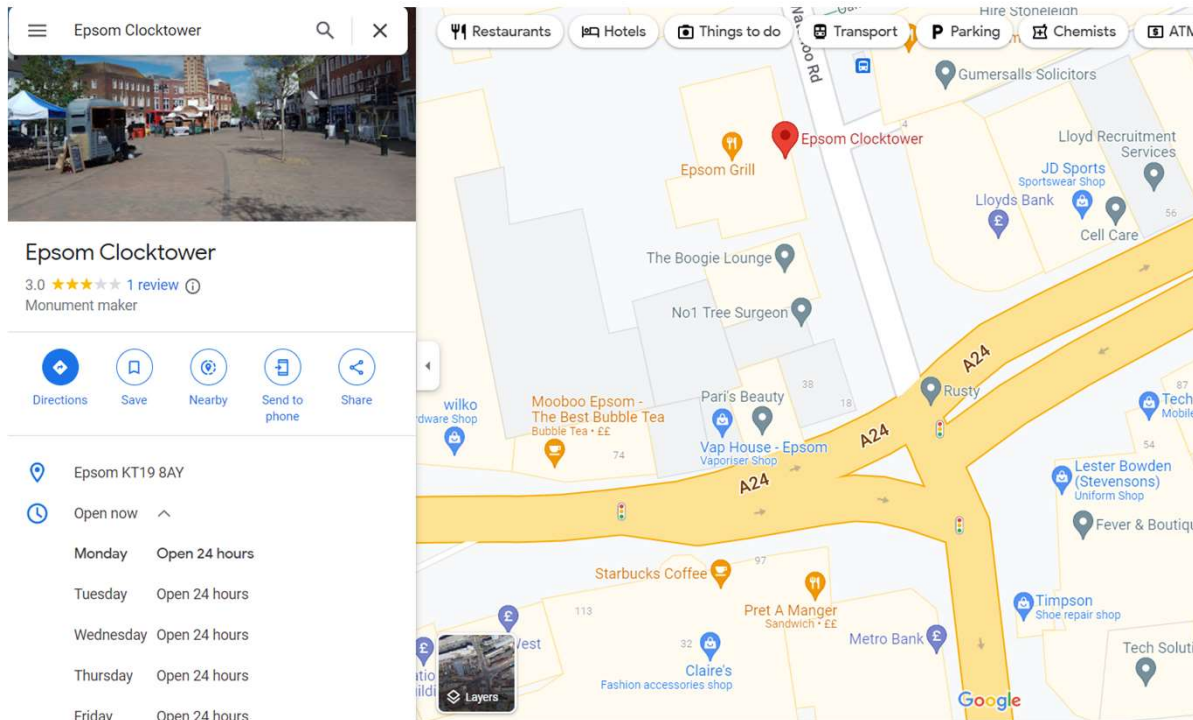
 Add a label

 Suggest an edit



AREA

Epsom Clocktower



<https://clocktowercarsuk.com>

Taxi Service in Epsom | ClockTower Cars Uk Call 01372 747 74

We are providing reliable **Epsom** Taxi Service, airport taxis, Cheap taxis, Local minicabs, and school runs in the area of the United Kingdom.

Book Now

Clocktower Cars · 01372 747 747 Get the App. 01372 747 747 ...

Download Our App For FREE

Whether you have an Android or Apple phone you will be able to ...

About Us

We are more than happy to assist you! For more information ...

Our Branches

In Surrey and Guildford you're never far away from a one our ...

[More results from clocktowercarsuk.com »](#)

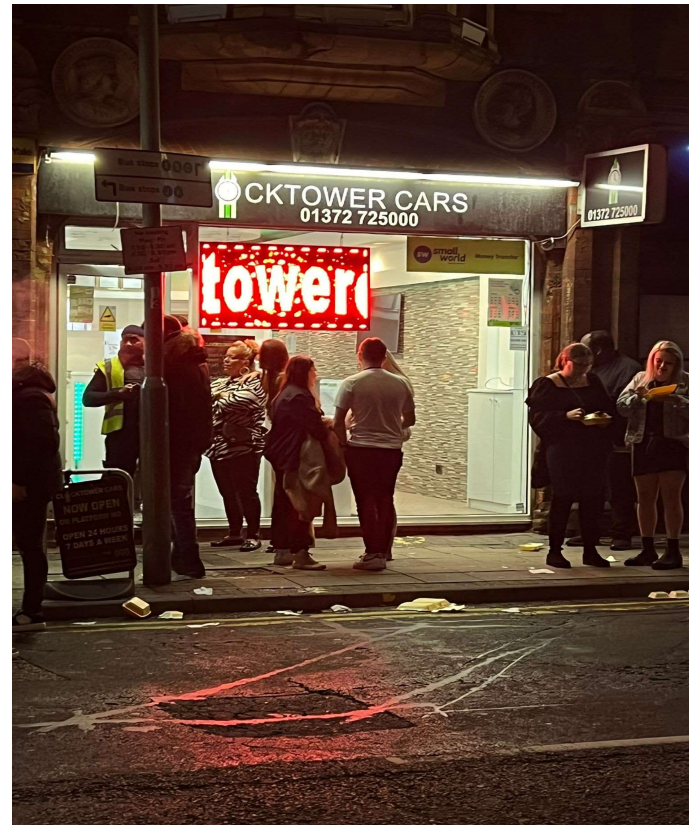
PHOTOS FROM DISPERSAL



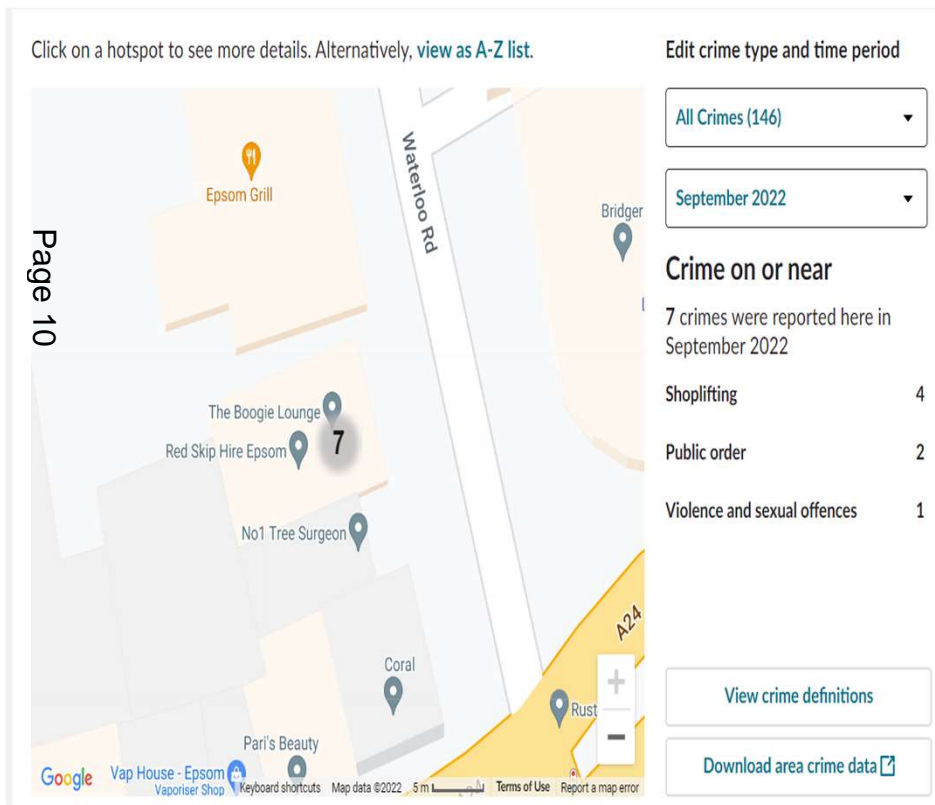
Photos from Friday 26 th

After 02:00 am

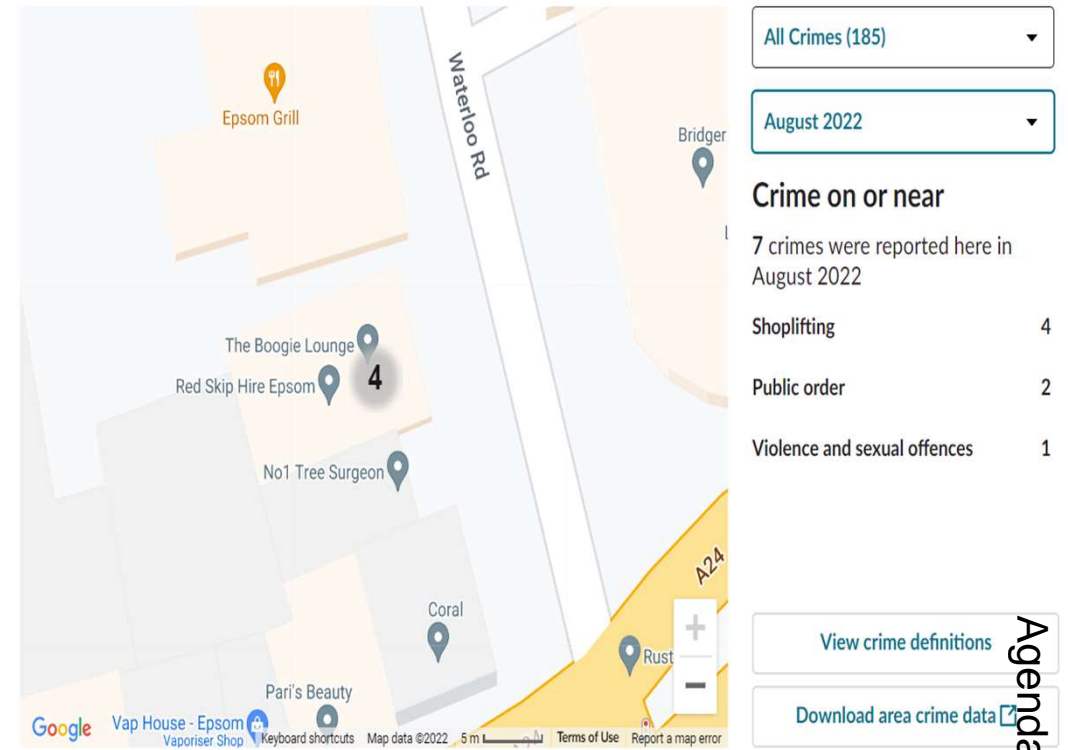
PHOTOS FROM DISPERSAL



CRIME DATA



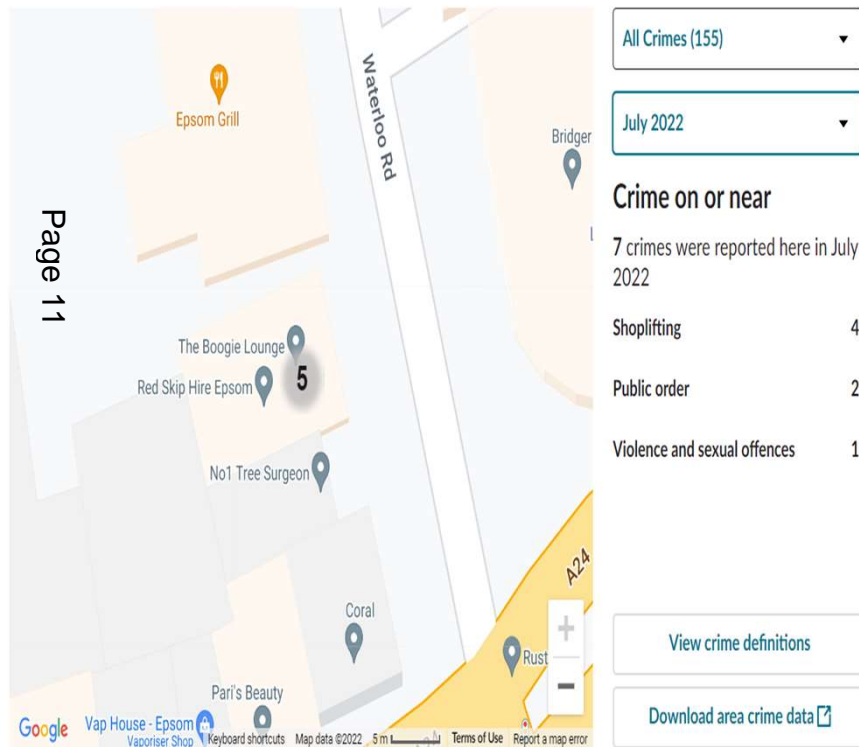
Click on a hotspot to see more details. Alternatively, [view as A-Z list](#).



CRIME DATA

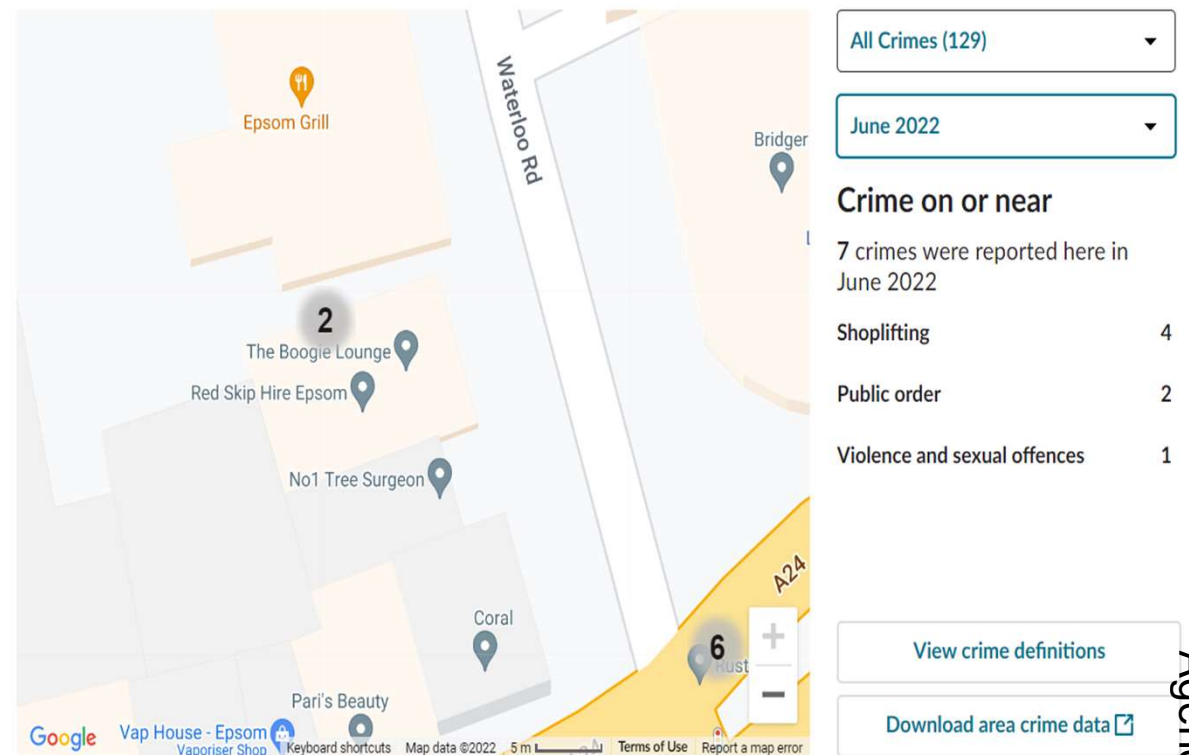
Click on a hotspot to see more details. Alternatively, [view as A-Z list](#).

Edit crime type and time period



Click on a hotspot to see more details. Alternatively, [view as A-Z list](#).

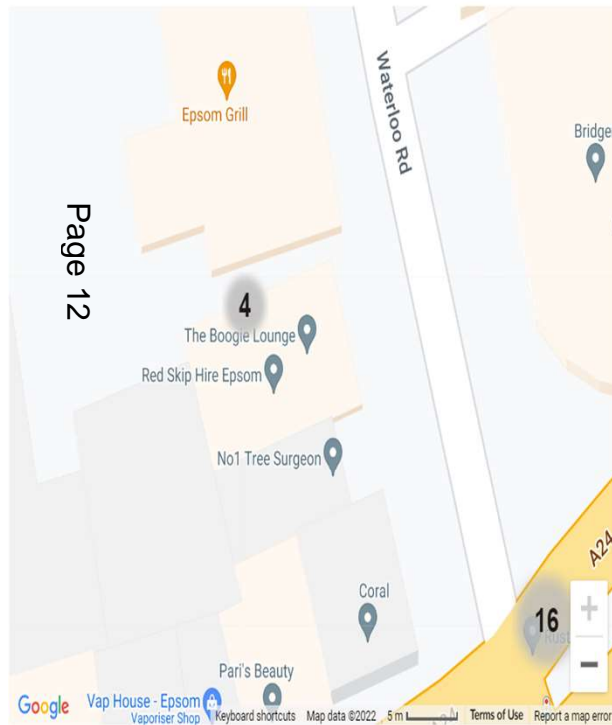
Edit crime type and time period



CRIME DATA

Click on a hotspot to see more details. Alternatively, [view as A-Z list](#).

Edit crime type and time period



All Crimes (167) ▼

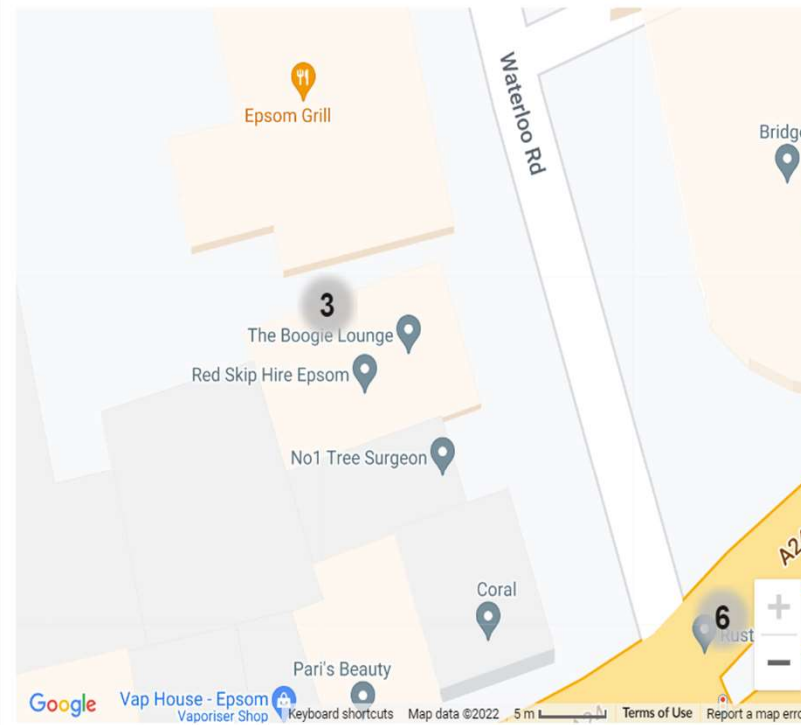
May 2022 ▼

[View crime definitions](#)

[Download area crime data](#)

Click on a hotspot to see more details. Alternatively, [view as A-Z list](#).

Edit crime type and time period



All Crimes (142) ▼

April 2022 ▼

[View crime definitions](#)

[Download area crime data](#)

Impact on the Area

- The area venues with closure hours up to 3.00 am, therefore EPSOM GRILL will not attract people but will be offering late night refreshment to be people who are already at the area.
- No sale of alcohol will be provided.
- After 02:00, the people at the area wants to buy even soft drinks after the premised is closed.

Medical Data

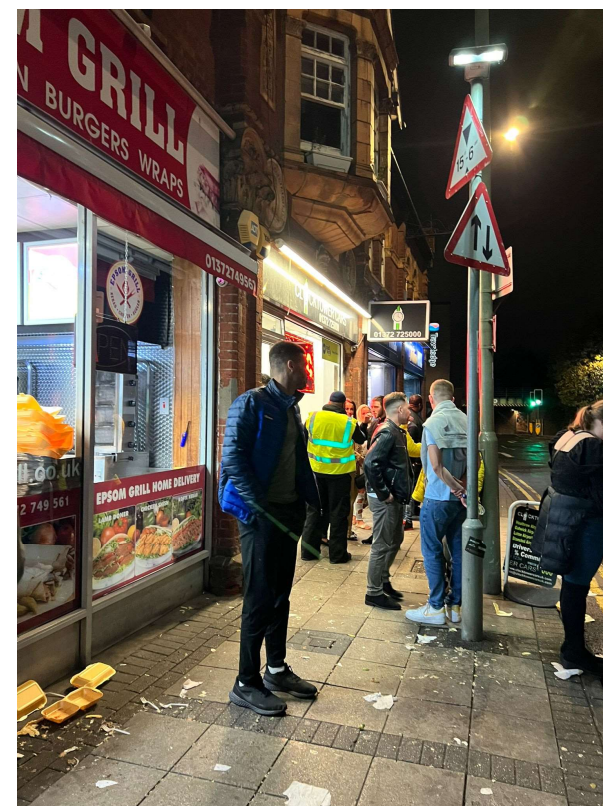
- According to medical data, eating and offering tea&coffee make people feel more alert and appear soberer.
- My client will be offering food and can provide complimentary tea&coffee to intoxicated customers.

Littering

In order to avoid Littering, EPSOM GRILL staff members will clean front of the premise after closure.

We can also provide Bins at the front of the premise on my client's expense.

We propose below condition for littering:
Sufficient measures must be in place to remove litter or waste arising from customers and to prevent such litter/waste accumulating in the immediate vicinity of their premises. Where necessary adequate measures must be in place to provide customers with sufficient receptacles for the depositing of waste materials such as food wrappings, drinks containers, smoking related litter etc.



Management

- During management of the business no incidence have been recorded.
- We can also see the details from the Crime data shared.

CONCLUSION

- Would like to request Sub Committee to grant late night refreshment for Thursday, Friday and Saturday.
- Thursday-Saturday Late night refreshment from 23:00-03:00.
Closure at 03:30.

PROPOSED CONDITIONS

- The licensable activities cease at 03:00 on Thursday, Friday and Saturday. Closure at 03:30
- At least one SIA door staff employed every Thursday, Friday and Saturday
- All deliveries will be made from the rear of the premises.
- Deliveries after 02:00 made to a home or business address with a valid postcode and not made to places such as parks, roadsides or landmarks (in keeping with existing condition 8 Annex 2)
- The SIA security staff employed at the premise shall be responsible for maintaining order and minimising noise and anti-social behaviour to the front of the premises.
- Door staff proactively encourage customers to leave the area after being served.
- Management and staff will be responsible for ensuring that a noise nuisance is not created to the rear of the premises, from either people or vehicle noise, during home delivery operations.
- Sufficient measures must be in place to remove litter or waste arising from customers and to prevent such litter/waste accumulating in the immediate vicinity of their premises. Where necessary adequate measures must be in place to provide customers with sufficient receptacles for the depositing of waste materials such as food wrappings, drinks containers, smoking related litter etc.
- Police Condition: **The management and staff will make all reasonable attempts to ensure that the premises is not open to members of public after 02:00.**
- **For this condition, we would like to request if we offer food from the window of the premise**

