



**To: All Members of the Planning Committee**

Dear Councillor,

**PLANNING COMMITTEE - THURSDAY, 24TH APRIL, 2025 , Council Chamber - Epsom Town Hall**

Please find attached the following document(s) for the meeting of the Planning Committee to be held on Thursday, 24th April, 2025.

**PLANNING OFFICER PRESENTATION SLIDES** (Pages 3 - 22)

For further information, please contact [democraticservices@epsom-ewell.gov.uk](mailto:democraticservices@epsom-ewell.gov.uk) or tel: 01372 732000

Yours sincerely

A handwritten signature in black ink, appearing to read 'Sing', written over a horizontal line.

Chief Executive

This page is intentionally left blank

# **Planning Committee Meeting**

**24 April 2025**

**Start time: 7.30pm**

# Item 1

## Declarations of Interest

Members are asked to declare the existence and nature of any Disclosable Pecuniary Interests in respect of any item of business to be considered at the meeting.

## Item 2

# Minutes of the Previous Meeting

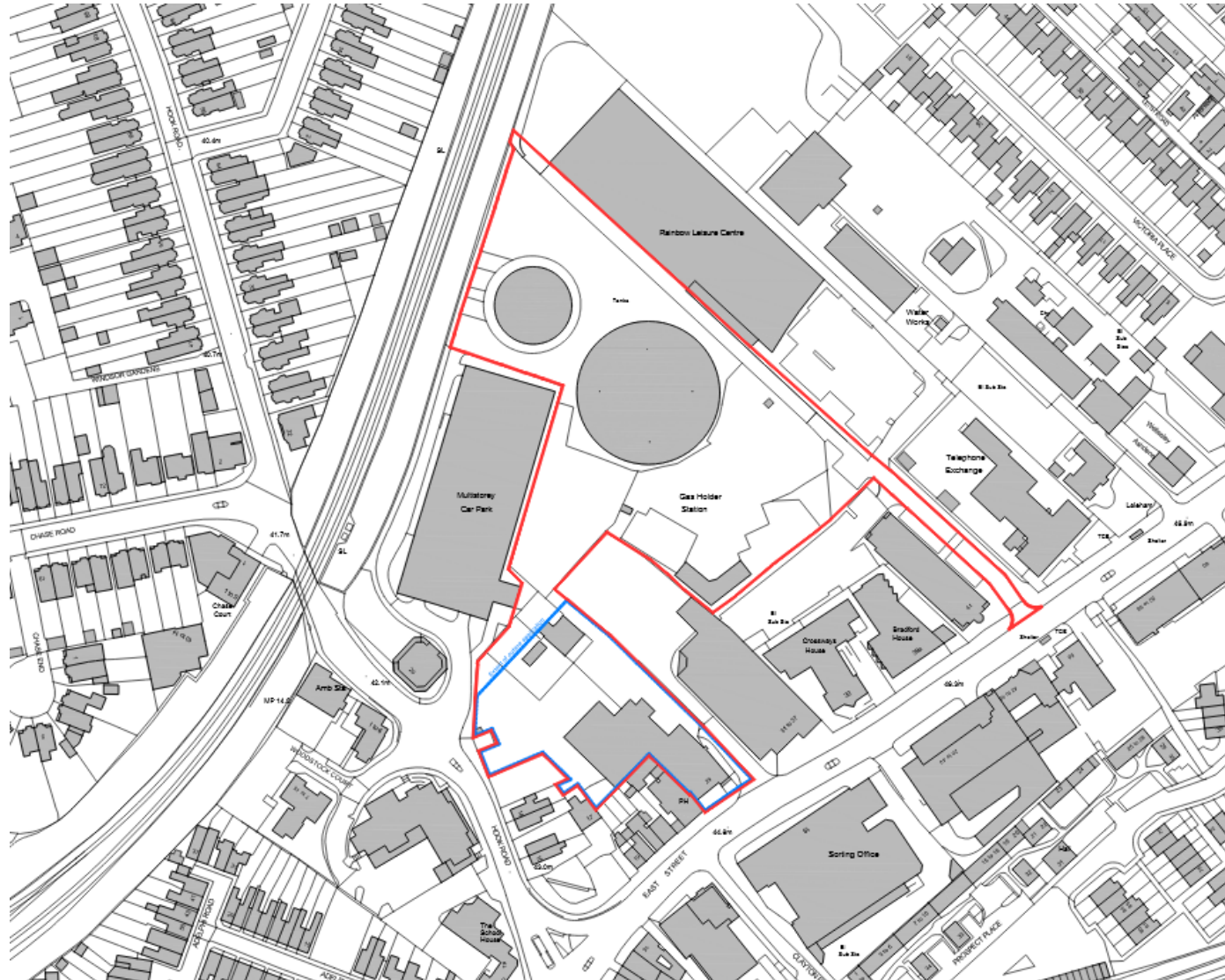
# Item 3

## **24/01107/FUL Land and Buildings at Former Gas Holder Station, East Street, Epsom, Surrey**

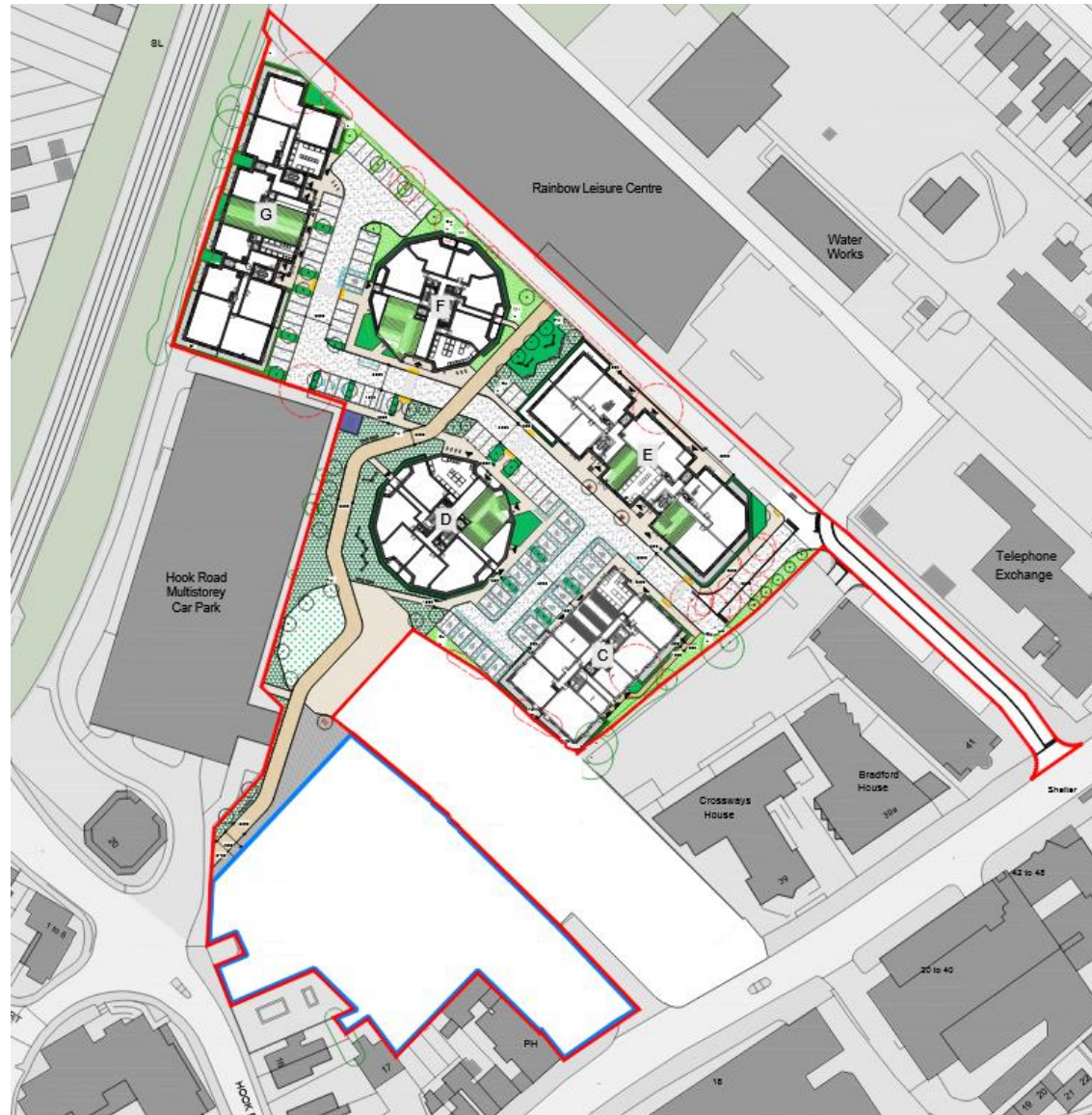
Hybrid planning application for the phased redevelopment for a) full planning permission for the demolition of existing buildings and structures, site wide remediation and the erection of five residential buildings (ranging between 8-12 storeys), new access arrangements, parking, hard and soft landscaping, open space and other associated works and b) severable outline planning permission, with all matters reserved except access, for the separate development demolition and re-provision of a Performing Arts Centre and Education building, hard and soft landscaping and other associated works



# Location Plan

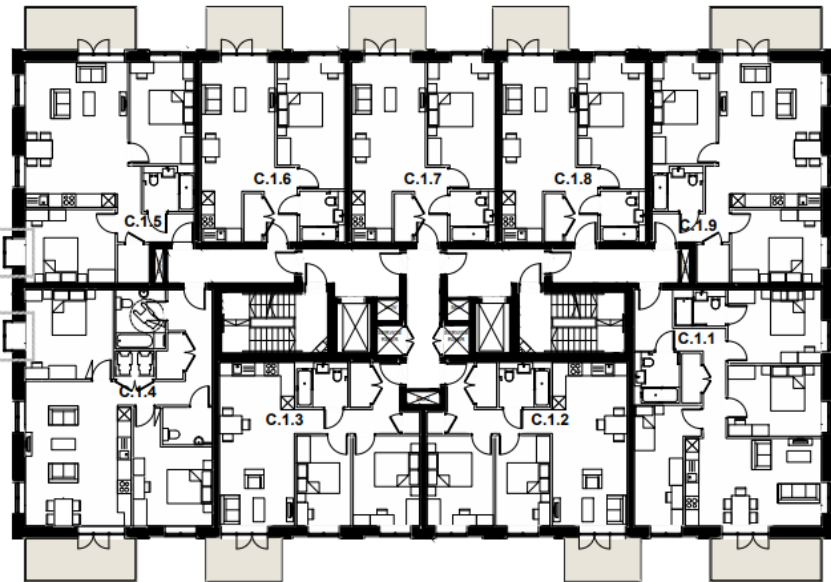


# Site Layout Plan



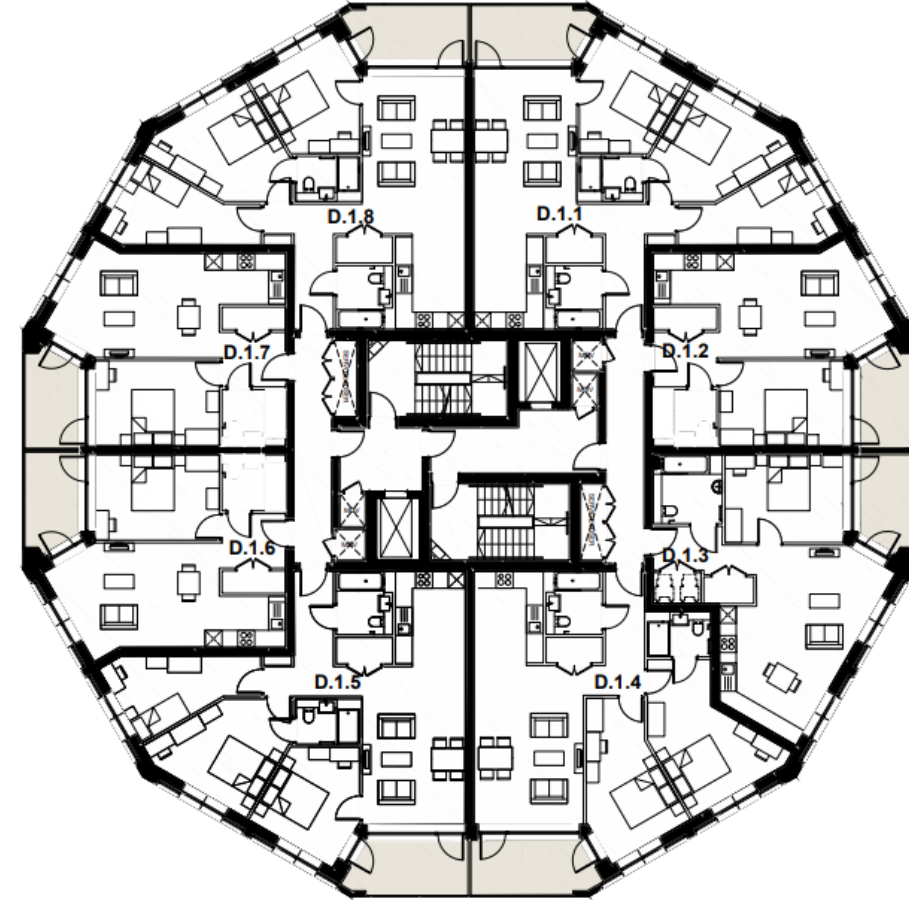


# Block C





# Block D



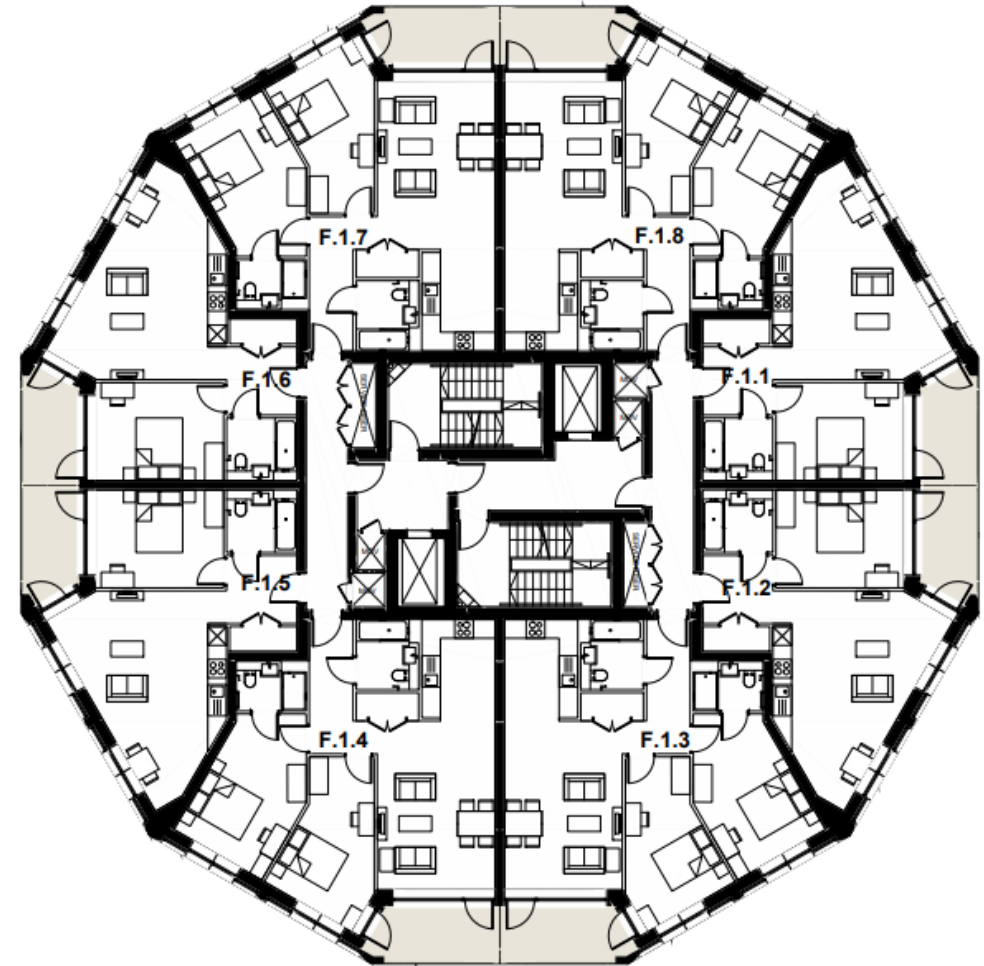


# Block E



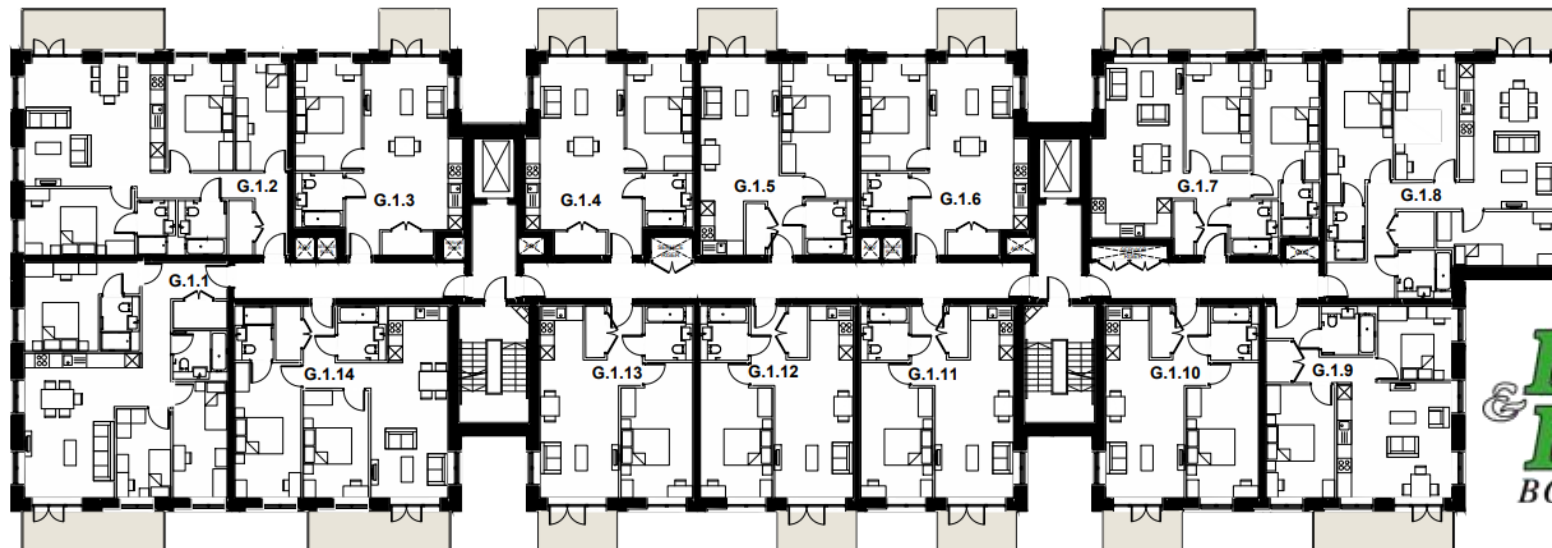
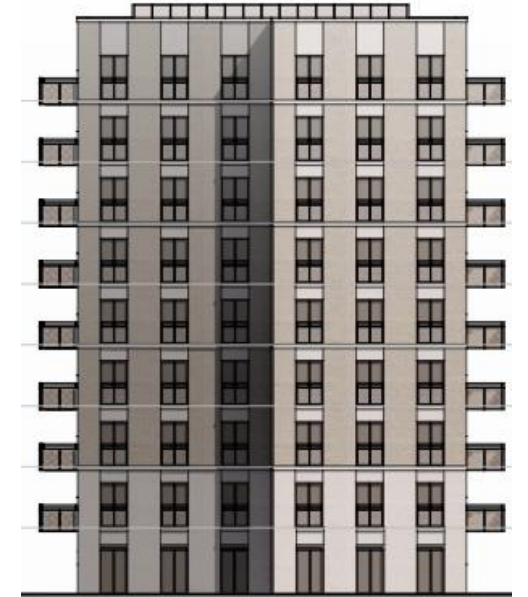


# Block F





# Block G





# Scheme in Comparison to Former Gas Holders







# Parking Layout

## 68 Parking Spaces –

- 21 Accessible Spaces
- 15 Fitted with EVCP
- Car Parking Management Plan



# Public Open Space and Landscaping



Green Landscape  
Edges

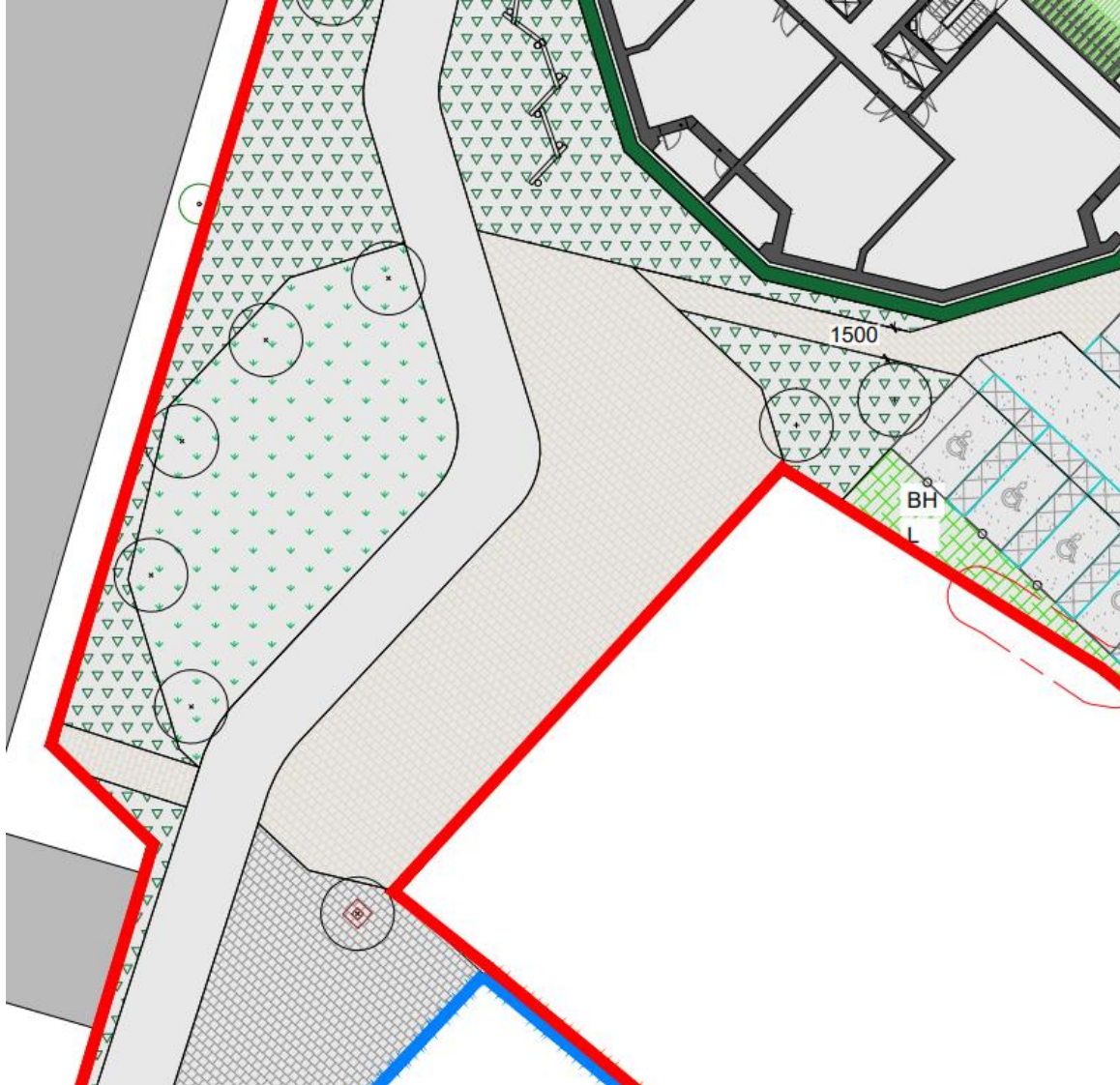
Children's Play Area

The Meadow Area

Green Landscape  
Edges

In The Round

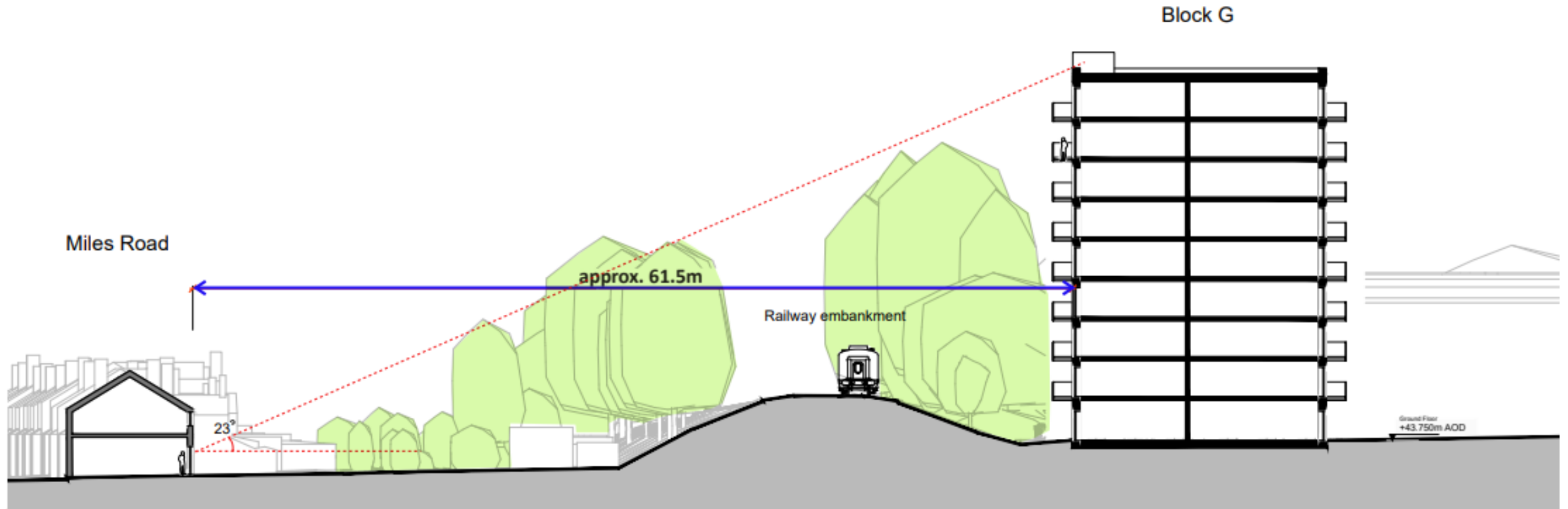
# In The Round



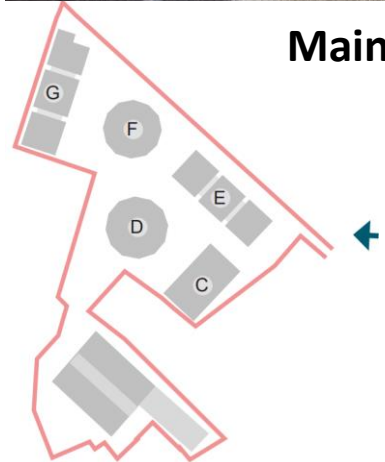
**A central area for community gathering and events, intended to be a platform for flexible recreation, events and exhibitions such as outdoor live performances, temporary play/art installations or pop-up food venues.**



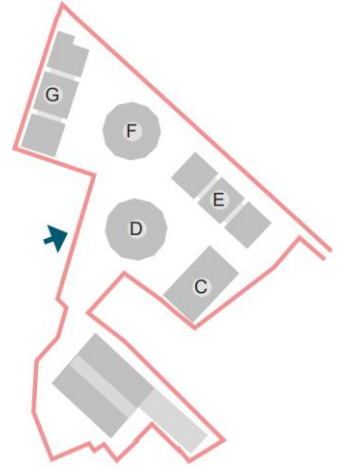
# Section Block G and Miles Road







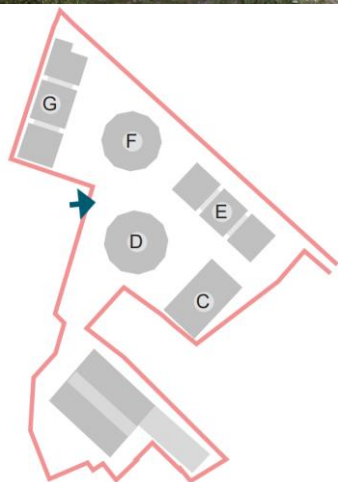
**Main Entrance to the Site**



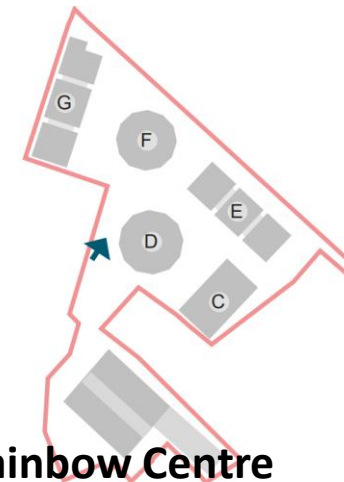
**Blocks D, F, E and C**







**Blocks F, E and D**

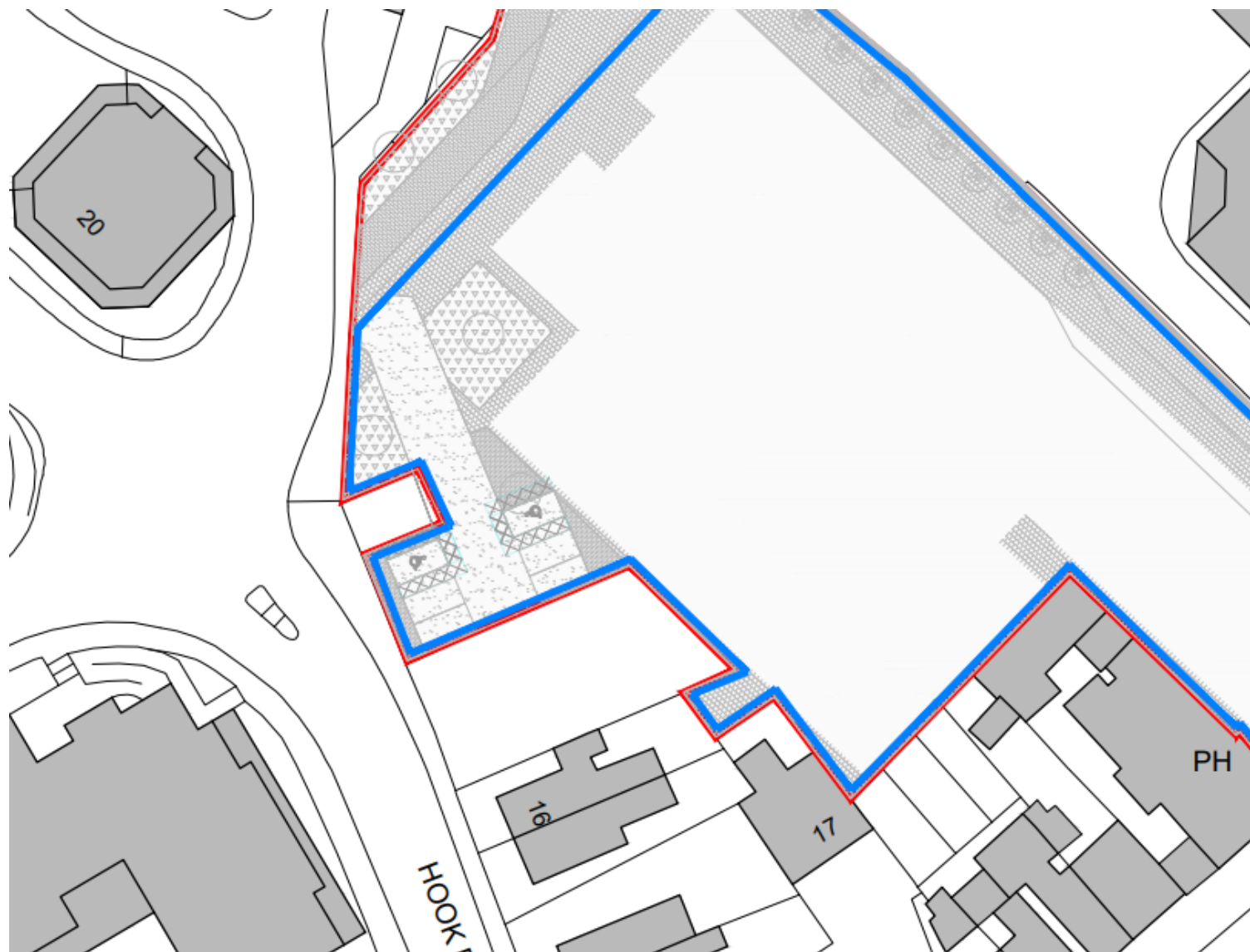


**Shared Pedestrian Route Towards the Rainbow Centre**





# Laines Theatre



This page is intentionally left blank