

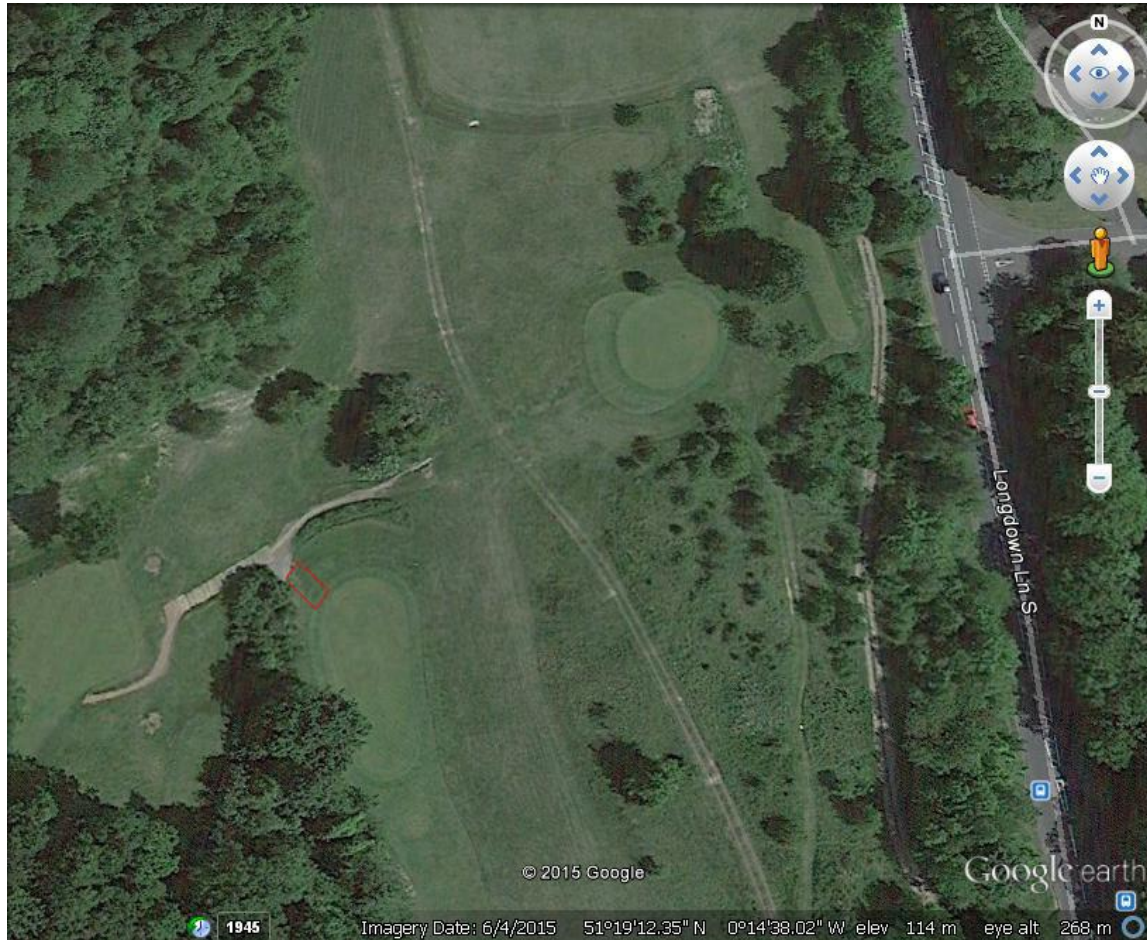
# Epsom Golf Club

Request for Sleeper Steps to  
and From 16<sup>th</sup> Green

Due to the recent wet weather, the severity of the slope and a couple of slips by golfers, we would like to ask permission to erect some steps adjacent to the back left of our 16<sup>th</sup> green. The plan would be to put in 6 steps 3ft wide and covered with green anti slip matting to eradicate the problem of a possible injury. The following photo shows the area where we want to erect these steps, and also shows how slippery the area is.



The picture below shows an overhead view of the area. The area in question is denoted by a red rectangle (not to scale) towards the bottom left hand corner of the image. Longdown Lane South is to the right of the picture and the junction is the one that leads towards Epsom Downs Station.



Just as an example the picture below illustrates what the steps will like once erected

