

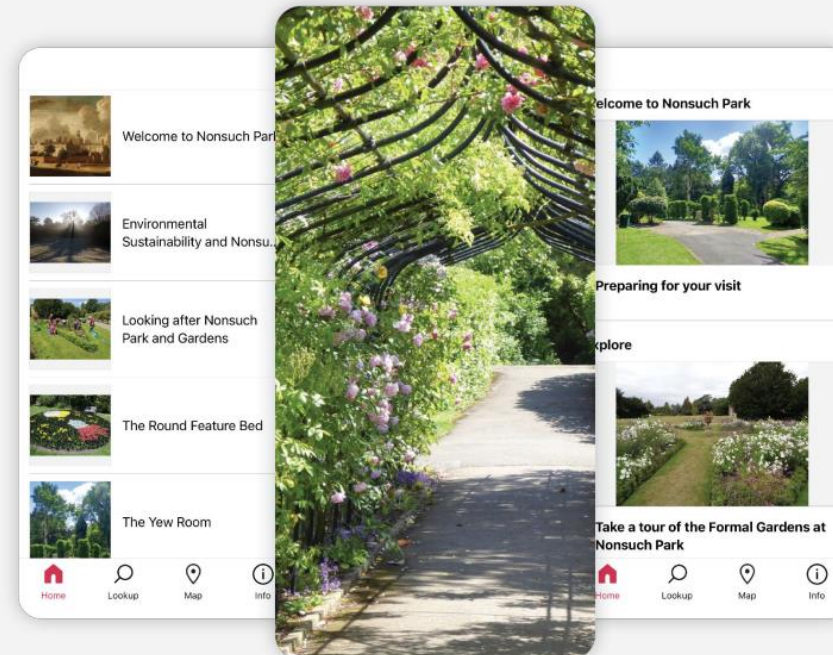


*Nonsuch Joint
Management Committee*

Heritage Updates – Oct 2023

Nonsuch Formal Gardens Walking Tour

- A collaborative project between EEBC, Bloomberg Connects, Nonsuch Voles and Friends of Nonsuch.
- Launched September 2023.
- Free to build and free to access.
- Dynamic QR codes – trackable data.
- Flexibility with copy/image updates.
- Inclusivity and Access for all
 - Alt-Text
 - Audio tour
 - Translated text



Bloomberg Connects

EPSOM EWELL

Donation Pillars

- Discussion held with [The Parks Foundation](#) – Sept 2023
 - Case Study – Bournemouth Aviary
 - Test period – Feb – April 2020 (limited duration due to COVID-19)
 - Contactless donation amount: £1
 - Donations received:
 - Contactless: £261
 - Cash: £850 (typically receive around £8,000 per year)
- Emotional v.s. Cultural hook
 - Audio prompts and rewards
- Costings
 - £3,000 per donation pillar
 - Approx. £1,500 on groundworks and graphics

